

Cornerstone PA30 Flow Sheet: Indication for Initial Mammogram* Codes

Revised
11/10/2009

***Initial mammogram** is the **first** mammogram of the screening cycle, whether a screening or diagnostic mammogram.

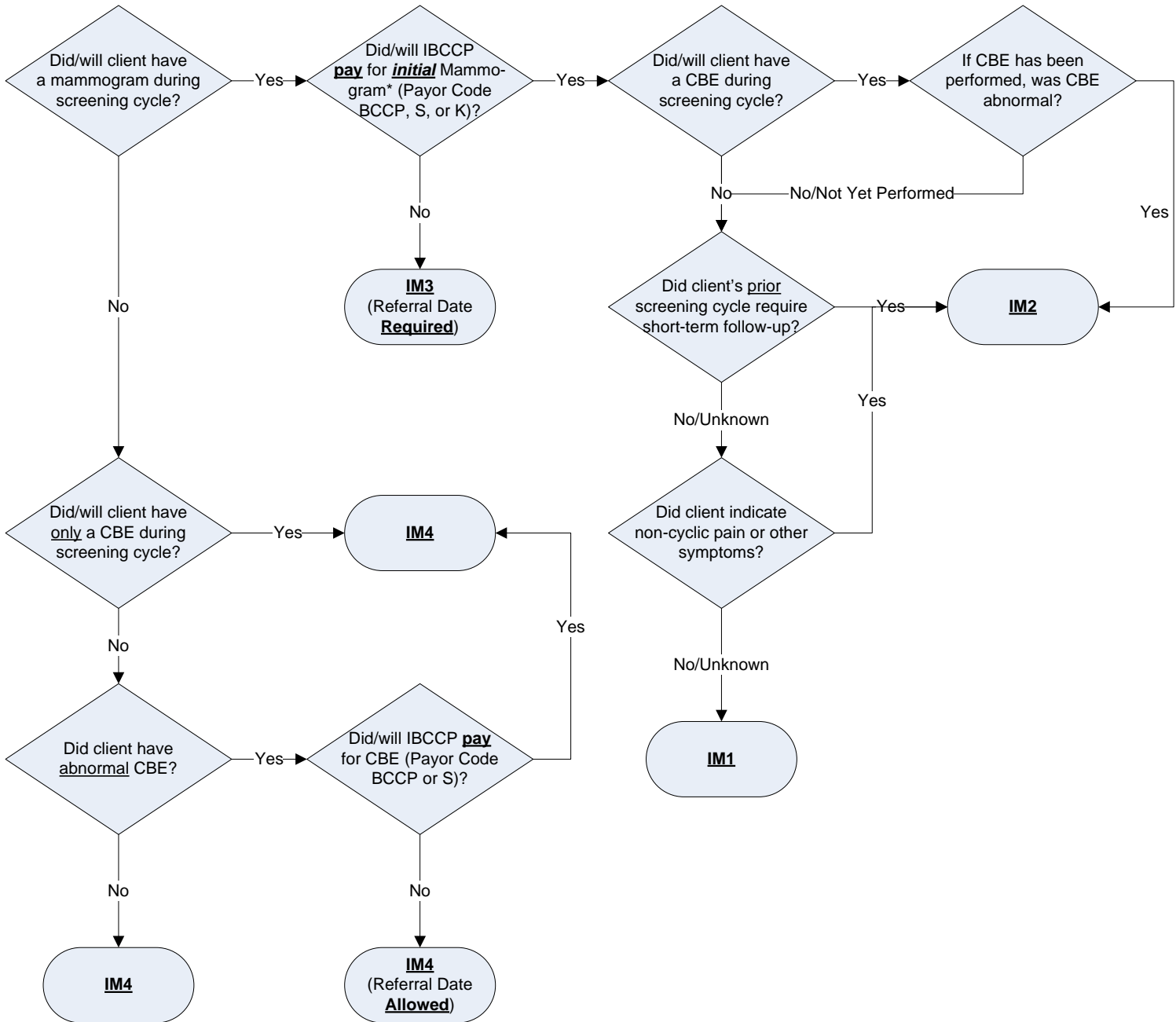
Indication for Initial Mammogram Codes:

IM1: Routine screening

IM2: Initial mammogram performed to evaluate symptoms (including non-cyclic breast pain), positive CBE results or previous abnormal

IM3: Initial mammogram done outside of Program—referred in for diagnostic evaluation

IM4: Initial mammogram not done—only received CBE or proceeded directly for other imaging or diagnostic work-up



Key Points to Consider for the Screening Cycle:

1. Why is client starting screening cycle (annual, follow-up, etc.)?
2. What screening/diagnostic procedures **have been or will be performed** to complete the screening cycle?
3. Were all procedures performed by IBCCP or were some performed by an outside source?
4. If additional information becomes available, will the Indication Code need to be edited?